



Ukraine, Kyiv,  
Komarova, ave., 42



+38 (044) 451-63-66  
+38 (067) 439-20-20  
+38 (066) 081-21-99



metiz-group.ua  
mt-gr@ukr.net

## Direct fastening

### Product Catalog 2019

- Mounting guns
- Building cartridges
- Dowels

metiz-group.ua



## ➤ What is it - mounting guns?

Direct mounting equipment or mounting guns are construction tools designed to simplify and speed up construction and installation work in the process of modern construction.

Construction guns provide an opportunity to perform operational installation of various building structures. Especially direct mounting technique is useful where there is limited space or you have to work at height.

Moreover, pneumatic tools are not afraid of bad weather conditions, which greatly expands the range of their use. The building gun happens both the pneumatic and gas. About the characteristics we describe below.

## ➤ Content

<b>Mounting guns</b>	2-14
<b>Building cartridges</b>	15
<b>Dowels</b>	16-19
<b>Notes</b>	20

## ➤ MG - 370

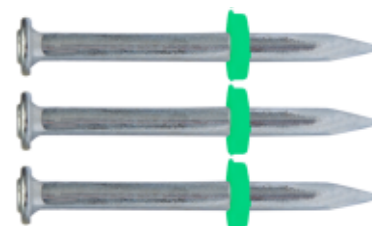


### Description:

Semi – Automatic Powder-Actuated tool is used for the general building works. Compact, lightweight, reliable in work and easy to maintain. Warranty - 3 years.

### Specifications:

Sizes	330x50x155 mm
Weight	2.3 kg
Type of the power load	caliber .27 6.8/11mm, tape 10pcs.
Type of the shooting nail	3.7 mm, single
Diameter of washer/cap	8 mm
Length of the shooting nail	27-62 mm
Thickness of attachment part	1-40 mm
Basic material	concrete, metal
Power adjustment	No
Piston sleeve	No



## ➤ MG - 355

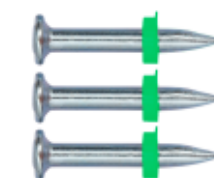


### Description:

Semi – Automatic Powder-Actuated tool is used for the general building works. Thanks to the compact sizes, low weight and power adjustment has a wide scope of application. 3 year warranty adds confidence in the future.

### Specifications:

Sizes	330x50x155 mm
Weight	2.3 kg
Type of the power load	caliber .27 6.8/11mm, tape 10pcs.
Type of the shooting nail	3.7mm, single
Diameter of washer/cap	8 mm
Length of the shooting nail	27-62 mm
Thickness of attachment part	1-40 mm
Basic material	concrete, metall, solid brick
Power adjustment	Yes
Piston sleeve	No



## ➤ MG - 251



### Description:

Simple single-shot powder actuated tool.  
Economy option for small volumes of the work.

### Specifications:

Sizes	372x45x140 mm
Weight	1.8 kg
Type of the power load	caliber .22, 5.6/16mm, single
Type of the shooting nail	3.7 mm, single
Diameter of washer/cap	8 mm
Length of the shooting nail	27-72 mm
Thickness of attachment part	1-40 mm
Basic material	Concrete, metall
Power adjustment	Selection of the power load
Piston sleeve	Rubber bushing



## ➤ MG - 710



### Description:

Modern replacement of the PC-84.  
Uses the same drive pins and power loads,  
But the convenience has been significantly improved and safety of use

### Specifications:

Sizes	330x50x155 mm
Weight	2.3 kg
Type of the power load	caliber .27 6.8/11 mm
Type of the shooting nail	4.5 mm, single
Diameter of washer/cap	8 mm
Length of the shooting nail	27-62 mm
Thickness of attachment part	1-40 mm
Basic material	concrete, matall
Power adjustment	selection of the power load
Piston sleeve	No



## ➤ MG - 655

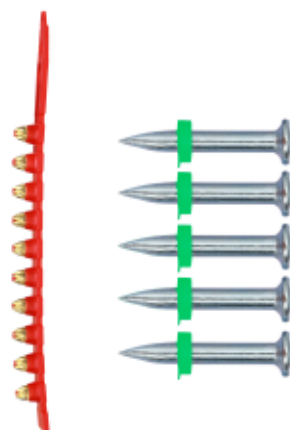


### Description:

Powder actuated tool with the extension for ceiling fastening.  
Designed for finishing and electrical work

### Specifications:

Sizes	470x80x160 mm
Weight	3.6 kg
Type of the power load	caliber .27 , 6.8/11 mm, in tape
Type of the shooting nail	3.7 mm, single
Diameter of washer/cap	8 mm
Length of the shooting nail	27-32 mm
Thickness of attachment part	1-5 mm
Basic material	concrete, metall
Power adjustment	selection of the power load
Piston sleeve	no



## ➤ MG - GCN40



### Description:

The gas assembly gun for internal finishing and electric installation work. Highest assembly speed combined with low cost attachment point. The base material is concrete, solid brick.

### Specifications:

Sizes	372x386x109 mm
Weight	3.4 kg (including accumulator)
Type of the power load	7,4 v / 1,2 Am / Lithium
Type of the shooting nail	3.0 mm, in plastic tape
Diameter of washer/cap	33 pcs.
Length of the shooting nail	15-40 mm
Thickness of attachment part	gas bottle ~1000 dowels / bottle
Basic material	concrete, solid bricks
Power adjustment	2-3 dowels per sec.
Piston sleeve	cleaning: 1 time per 1000 dowels





## ➤ MG - GCN40SP



### Description:

The gas assembly gun for internal finishing and electric installation work. Highest assembly speed combined with low cost attachment point. The base material is concrete, solid brick.

### Specifications:

Sizes	403x386x109 mm
Weight	3.5 kg (including accumulator)
Type of the power load	7,4 v / 1,2 A / lithium
Type of the shooting nail	3.0 mm, in plastic tape
Diameter of washer/cap	33 dowels
Length of the shooting nail	15-40 mm
Thickness of attachment part	gas bottle ~1000 dowels per bottle
Basic material	concrete, solid bricks
Power adjustment	2-3 dowels per sec.
Piston sleeve	cleaning: 1 time per 1000 dowels



## ➤ MG - GI150



### Description:

Gas mounting gun for attaching insulation 50-150 mm thick to concrete or solid brick. Opportunity to speed up the process of attaching insulation at times, put off drills and stop buying dozens of drills.

### Specifications:

Sizes	403x386x109 mm
Weight	3.1 kg (including accumulator)
Type of the power load	7,4 v / 1,2 A / lithium
Type of the shooting nail	dowel with plastic cover
Diameter of washer/cap	1 dowel
Length of the shooting nail	50-150 mm
Thickness of attachment part	gas bottle ~1000 dowel per bottle
Basic material	concrete, solid bricks
Power adjustment	2-3 dowels per second
Piston sleeve	cleaning: 1 time per 1000 dowels



## ➤ MG - GI200



### Description:

Gas mounting gun for mounting insulation 50–200 mm thick to concrete or solid brick. Opportunity to speed up the process of attaching insulation at times, put off drills and stop buying dozens of drills.

### Specifications:

Sizes	403x386x109 mm
Weight	3.1 kg (including accumulator)
Type of the power load	7,4 v / 1,2 A / Lithium
Type of the shooting nail	dowel with plastic cover
Diameter of washer/cap	1 dowel
Length of the shooting nail	50-200 mm
Thickness of attachment part	gas bottle ~1000 dowels per bottle
Basic material	concrete, solid bricks
Power adjustment	2-3 dowels per second
Piston sleeve	cleaning: 1 time per 1000 dowels



## ➤ MG - GFN3490

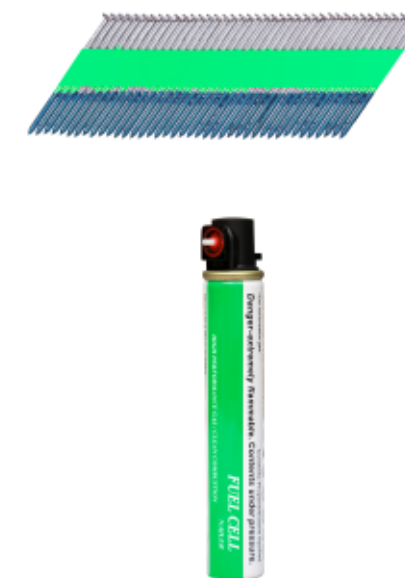


### Description:

Gas installation gun for internal installation work. Designed to work with wood. The ability to speed up the process of fixing.

### Specifications:

Sizes	306x378x110 mm
Weight	3.35 kg (including accumulator)
Type of the power load	7,4 V / 1,2 A / Lithium
Type of the shooting nail	in paper tape
Diameter of washer/cap	1 tape (48 nails)
Length of the shooting nail	50-90 mm
Thickness of attachment part	gas bottle ~1000 nails per bottle
Basic material	wooden parts
Power adjustment	2-3 nail per second
Piston sleeve	cleaning: 1 time per 1000 nails



## ➤ MG - PPRT40



### Description:

Electric mounting gun for knitting fittings. Highest binding speed combined with low attachment point cost.

### Specifications:

Sizes	196x102x285 mm
Weight	2,2 kg (including accumulator)
Type of the power load	14,4 v / 3 A / Lithium - ion
Type of the shooting nail	0,8 mm
Diameter of washer/cap	1 tape
Length of the shooting nail	up to 40 mm
Thickness of attachment part	90 min.
	110 knots on 1 tape



## ➤ MG - 008



### Description:

The tool is designed for mounting brackets under the ceiling without the use of stairs or other means. Simple and economical to use.

### Specifications:

Sizes	Length up to 380 mm
Weight	1.4 kg
Type of the power load	8,5 / 10 mm
Basic material	Concrete





## ➤ MG - 007



### Description:

Hand tools for hammering dowel-nails or ordinary nails with a hammer.

### Specifications:

Sizes	250x65x65 mm
Weight	200 g
Type of the power load	no
Type of the shooting nail	single
Diameter of washer/cap	8 mm
Length of the shooting nail	27-32 mm
Thickness of attachment part	1-5 mm
Basic material	concrete, metal, solid bricks
Power adjustment	no
Piston sleeve	no



## ➤ Building cartridges 6.8/11 in tape



Caliber	Power	Packing	Material
.27 yellow	278-354 Dj	100 pcs	light / middle concrete
.27 red	354-458 Dj	100 pcs	middle / hard concrete / metall
.27 black	439-534 Dj	100 pcs	hard concrete / metall
For PT 355, MG 370, DX 2, DX 460			

## ➤ Building cartridges 5.6/16 single



Caliber	Packing	Material
.22 green	100 pcs	light concrete
.22 yellow	100 pcs	light / middle concrete
.22 red	100 pcs	middle / hard concrete / metall
For MG 251, DX E72		

## ➤ Building cartridges 6.3/10 on disc



Caliber	Packing	Material
.25 yellow	10 pcs	light / middle concrete
.25 red	10 pcs	middle / hard concrete / metall
For MG 460, P 370		

## ➤ Building cartridges 6.8/18 single



Caliber	Power	Packing	Material
.27 Long D3 Blue	1037 Dj	100 pcs	light / middle concrete
.27 Long D4 Red	1174 Dj	100 pcs	middle / hard concrete / metall
For MG 710, ПЦ 84, МЦ 52			



Metiz Group

## Mounting dowels DN. 3,7 mm



Rod diameter	Hats diameter	Length	Landing depth (in concrete)	Thickness of fixing material	Centerline distance (concrete)	Distance to the hem (concrete)
3,7MM	8MM	27 MM	22-27 MM	1-5 MM	100 MM	100 MM
3,7MM	8MM	32 MM	22-32 MM	1-10 MM	100 MM	100 MM
3,7MM	8MM	37 MM	22-32 MM	5-15 MM	100 MM	100 MM
3,7MM	8MM	42 MM	22-32 MM	10-20 MM	100 MM	100 MM
3,7MM	8MM	47 MM	22-32 MM	15-25 MM	100 MM	100 MM
3,7MM	8MM	52 MM	22-32 MM	20-30 MM	100 MM	100 MM
3,7MM	8MM	57 MM	22-32 MM	25-35 MM	100 MM	100 MM
3,7MM	8MM	62 MM	22-32 MM	30-40 MM	100 MM	100 MM

For PT 355, MG 370, MG 251, DX 2, DX E72

Dowel for fastening wooden and metal parts to concrete (for example formwork plywood, wooden guides, plasterboard profile, etc.)

## Mounting dowels DNC. 3.7 mm in tape



Rod diameter	Hats diameter	Length	Landing depth (in concrete)	Thickness of fixing material	Centerline distance (concrete)	Distance to the hem (concrete)
3,7MM	8MM	27 MM	22-27 MM	1-5 MM	100 MM	100 MM
3,7MM	8MM	32 MM	22-32 MM	1-10 MM	100 MM	100 MM
3,7MM	8MM	37 MM	22-32 MM	5-15 MM	100 MM	100 MM
3,7MM	8MM	42 MM	22-32 MM	10-20 MM	100 MM	100 MM
3,7MM	8MM	47 MM	22-32 MM	15-25 MM	100 MM	100 MM
3,7MM	8MM	52 MM	22-32 MM	20-30 MM	100 MM	100 MM
3,7MM	8MM	57 MM	22-32 MM	25-35 MM	100 MM	100 MM
3,7MM	8MM	62 MM	22-32 MM	30-40 MM	100 MM	100 MM

For MG 460, DX 460

Dowel for fastening wooden and metal parts to concrete (for example formwork plywood, wooden guides, plasterboard profile, etc.)



Metiz Group

## Mounting dowels DNSW. 3.7 mm with the puck 25 mm



Rod diameter	Hats diameter	Length	Landing depth (in concrete)	Thickness of fixing material	Centerline distance (concrete)	Distance to the hem (concrete)
3,7MM	8/25MM	27 MM	22-27 MM	1-5 MM	100 MM	100 MM
3,7MM	8/25MM	32 MM	22-32 MM	1-10 MM	100 MM	100 MM
3,7MM	8/25MM	37 MM	22-32 MM	5-15 MM	100 MM	100 MM
3,7MM	8/25MM	42 MM	22-32 MM	10-20 MM	100 MM	100 MM
3,7MM	8/25MM	47 MM	22-32 MM	15-25 MM	100 MM	100 MM

For PT 355, MG 370, MG 251, DX 2, DX E72

Dowel for attaching thin and low-strength sheet materials to concrete (for example waterproofing materials, plaster mesh, etc.)

## Mounting dowels 4,5 mm



Rod diameter	Hats diameter	Length	Landing depth (in concrete)	Thickness of fixing material	Centerline distance (concrete)	Distance to the hem (concrete)
4,5MM	12MM	30 MM	30 MM	1MM	100 MM	100 MM
4,5MM	12MM	40 MM	30 MM	10 MM	100 MM	100 MM
4,5MM	12MM	50 MM	30 MM	20 MM	100 MM	100 MM
4,5MM	12MM	60 MM	30 MM	30 MM	100 MM	100 MM
4,5MM	12MM	70 MM	30 MM	40 MM	100 MM	100 MM
4,5MM	12MM	80 MM	30 MM	50 MM	100 MM	100 MM

For MG 710, ПЦ 84, МЦ 52

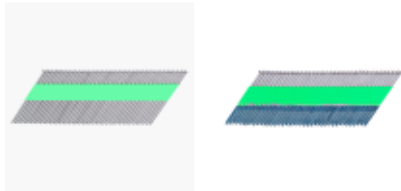
Dowel for fastening wooden and metal parts to concrete (for example, formwork plywood, wooden guides, plasterboard profile, etc.)

Mounting dowels for thermal insulator



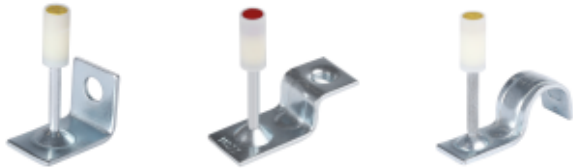
Rod diameter	Head diameter	Length	Thickness of insulation	Centerline distance (concrete)	Distance to the hem (concrete)
3,7mm	60 mm	50 mm	50 mm	100 mm	100 mm
3,7mm	60 mm	80 mm	50-80 mm	100 mm	100 mm
3,7mm	60 mm	100 mm	80-100 mm	100 mm	100 mm
3,7mm	60 mm	120 mm	100-120 mm	100 mm	100 mm
3,7mm	60 mm	150 mm	120-150 mm	100 mm	100 mm
For MG - GI150					
Dowel for attaching insulation thickness from 50mm to 150mm to concrete or solid brick.					

Nail for gas mounting gun



Type	Length	Diameter	Angle tilt	Cassette
smooth	50 mm	2,8 mm	34°	paper
smooth	75 mm	3,05 mm	34°	paper
smooth	90 mm	3,15 mm	34°	paper
corrugated	50 mm	2,8 mm	34°	paper
corrugated	75 mm	3,05 mm	34°	paper
corrugated	90 mm	3,15 mm	34°	paper

Dowel bullet for ceiling mounting the gun



	Diameter	Head Diameter
Dowel-cartridge with a suspension for Armstrong type suspended ceilings	3,7 mm	8 mm
Dowel cartridge with threaded bracket	3,7 mm	8 mm
Dowel cartridge with clamping bracket for pipes	3,7 mm	8 mm
For MG - 008		

Gas bottle for mounting gun



Name	Length	Capacity	Storage temperature
Fc148*	148mm	≈800 shots	-20° C - +50° C
Fc154*	154mm	≈900 shots	-20° C - +50° C
Fc165	165mm	≈1000 shots	-20° C - +50° C